

CROSSROADS

Monthly Newsletter for:

CUSTER LUTHERAN FELLOWSHIP

12622 US HWY 16A
PHONE: 605-673-4691
EMAIL: clf@gwtc.net

CUSTER, SD 57730

www.custerlutheran.com

VOLUME 20, ISSUE 5

MAY 2021

Inside This Issue

2	CLF Happenings
3	From Pastor Pam
4	Committees
5	Ministry
6	From the Church Office
7	Miscellaneous
8	From Bishop Eaton
9	Pictures
10	More Pictures
11	SD Synod News
12	SD Synod News
13	The Women of CLF
14	LSS
15	Daily Devotions
Inserts	- May Calendar - Birthdays & Anniversaries - Worship Help



Join us as we celebrate the confirmation of our 8th Graders in worship
Sunday, May 8th at 9:30 AM

Our Confirmands:

Keira Alfson
Wyatt Alfson
Jacie Behlings
Madisyn Lent

Lincoln Robb
Kian Rusch
Bryce Swanson
Brady Virtue



WEDNESDAY NIGHTLIFE

May 4th

5:15 PM Confirmation Banquet
6:00 PM Confirmation Banquet Worship

**There will be no meal or worship May 11 – 25.
We will begin Campfire Worship on Wednesday, June 1st
at 6:30 pm.**



RECOGNITION AND BLESSING OF GRADUATES

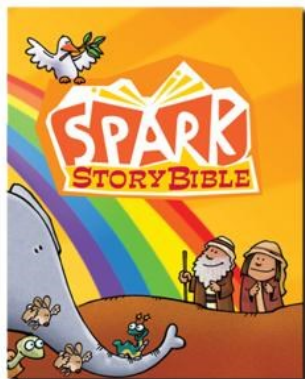
Join us as we celebrate and bless our high school graduates in worship on Sunday, **May 15th at 9:30 AM.**

Then on graduation day, **Saturday, May 21st**, graduates, and their families will gather for the annual Graduation Brunch at 9:00 AM at Custer Lutheran Fellowship. For over twenty-five years, members of CLF have been hosting this brunch on the morning of the Custer High School graduation ceremony to recognize our graduating seniors and their families. As a congregation, we are tremendously grateful for the graduates, for their families, and for our life together in the congregation.



SPARK KIDS

BY SARA MOONEY



During April, the kids made palms and crosses or God’s eyes and learned about Holy week. We washed their feet and shared the Last Supper. We learned why it is called Good Friday and how Mary discovered an empty tomb on Easter. We walked the Road to Emmaus (to the outdoor worship area) and realized Jesus wasn’t recognized right away when he returned.

Spark Kids is winding down with only two more weeks left! We will focus on sharing the last week of April while reading about the Early Believers and Lydia. The last day of Spark will be **May 4th** when we celebrate the Church’s birthday!

CLF LIBRARY



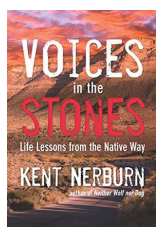
Li Fjerestad did such a wonderful job organizing and maintaining our CLF Library for so many years. It would be wonderful to have one or two people take over the library in honor of Li so that we can continue to have this wonderful resource for our congregation. Please let Pastor Pam know if you would be interested.

SATURDAY MEN’S BREAKFAST/BIBLE STUDY GROUP



The Men’s Breakfast/Bible Study Group will meet for breakfast and Bible study starting with breakfast at 8:30 AM on **May 14th**. Hope to see you then!

LADIES BOOK STUDY GROUP



Hey Ladies! Do you like to read? We have a group of ladies for the Ladies Book Study Group that meets on Thursday mornings at 9:30 AM. They have just recently started reading a new book called “Voices in the Stones”. They are an active group that would welcome you to the group. Come and check out this group and join in the fun. Hope to see you.

WALKING WORSHIP

Walking Worship is going to begin again! We were unable to have this wonderful experience for the last two years because of COVID, but we are excited to start



this up again this year. We will explore a number of different areas as we walk, sing, read scripture, and enjoy Communion together.

We will begin on **Thursday, May 19th at 6:30 pm at Stockade Lake**. We will meet at the beach and walk up to the spillway, which is about half a mile. We walk slow and enjoy fellowship as we worship together in God’s beautiful creation. Keep an eye on the church Facebook page for any changes and updates.



I recently read this article written by Jung Eun Sophia Park (author of *An Asian Woman's Religious Journey with Thomas Merton*, and associate professor of religious studies and philosophy at Holy Names University in California) in *Sojourners May* magazine, and wanted to share it with you. I know it is a bit long, but please read it through to the end. This is a wonderful article about what it means to live in the reality of Easter with a Risen Christ.



~~~~~

After the solemn journey of Lent, through which we embrace the mystery of the death of Jesus Christ, we enter the mystery of Easter, a new life. And as we celebrate Easter, we cannot remain in the feelings of fear and anxiety, which merely lead us into inaction. All the gospels Easter narratives include the empty tomb. Our standing in front of the empty tomb symbolizes our standing at the threshold to new life. For example, in John's gospel we imaginatively encounter Mary Magdalene, who runs to the grave with spices to prepare for Jesus' funeral while continuing to be sad. However, at the dawn of Easter she hears Jesus say, "Do not hold onto me."

At the very familiar space of death, representing deep feelings of despair, Jesus' voice introduces a cut or prohibition and indicates that the old way cannot continue to operate beyond this point. Upon hearing this, Mary must face the empty tomb, which signifies a lack or a hole. The starting point, then, from which to walk into the paschal mystery, can be the acknowledgment that the lack of full wisdom, perfection, and completeness is the reality of the self and the world. Often, we experience resistance to moving or walking onto a new or unknown path, while still fully knowing a new life is waiting. The life of resurrection commands us to step into the resurrected body of Jesus Christ. In this pandemic-ridden time, what does it mean to walk into the new life of the Risen Christ?

First, the life of the paschal mystery begins with an embrace of a lack or a hole in our lives, which may be our sorrow or hopelessness in the pursuit of sincere faith. The resurrected body finds expression in that Jesus' physical body disappears, and he then stands beyond our horizon of comprehension; we walk onto the unknown path. The empty tomb – this hole – always lures us to more beyond our framework of understanding and action. The new hope running through the paschal mystery invites us to embrace our wounds and guilt derived from the failure to bring justice and peace in this world.

Second, the resurrected body of Jesus becomes the Path or the Way by which his life force moves forward. Like wind or water, Jesus resurrected body continuously moves and touches the world and all humankind. In our paschal faith, we become a part of the resurrected body of Christ, this life force that flows and moves constantly.

The 13<sup>th</sup>-century German mystic Mechthild of Magdeburg saw grace as light flowing from the Godhead. Her visions encourage us to live the Easter mystery, the life force that the resurrected body endows us with to flow and move. Here, our body and Christ's resurrected body are mutually engaged through the flowing life force. Love, as a drive, cannot stay; it is constantly moving.

Similarly, the *Tao Te Ching* (a central text of both philosophical and religious Taoism foundational in many Asian cultures) also manifest a moving truth or life force, called the Tao ("the Way"). Chapter 8 recalls: "The highest form of goodness is like water. / Water knows how to benefit all things without striving with them. / It stays in places loathed by all people. / Therefore, it comes near the Tao."

As a part of the resurrected body of Christ in the Tao, we too are supposed to flow like water, to serve the world peacefully, without any violence or hatred. In pursuing justice in the world, we are to be willing to go to any spaces that cause discomfort and unfamiliarity, because then we are close to the Risen Christ.







## NEW EQUIPMENT AT CLF

Custer Lutheran Fellowship Council has recently purchased some new equipment to assist our Custodian Augie Heyne, with the maintenance of the lawn care this year. Check out this new ride for the summer! Thank You to those whom made this possible!



## SOCIAL MINISTRY

Your Social Ministry Team would like to thank everyone for their generous offerings during the CLF Build-A-Mountain event. Carloads of items will be delivered to each of our local five non-profit organizations doing God's Work in our community. In addition to the "wish list" items, cash offerings were also collected: W.E.A.V.E will receive \$303, Pine Ridge Diaper Drive \$401, Operation Black Hills Cabin \$206, Battle Mountain Humane Society \$368, and the LSS Loads of Love \$175, from cash offerings. Again, thank you fellow parishioners!



## WORSHIP & MUSIC

I got up this morning and looked out the window and saw the beautiful blue sky, birds chirping, and the wonderful green grass appearing. We live in such a beautiful area.

This article will be rather short because we will be going into the summer months with some fresh ideas.

We have been given the gift of music. Everyone can share in music. We do not have to have a beautiful voice to praise God.

Our confirmation young people will be confirmed on May 8th and we rejoice in these young, wonderful people who have completed this step in their lives.

Graduation students will also be honored and sent off into a new era of their lives. We see the enthusiasm and excitement to take this step into a new period of their lives. We send them off with love and prayers.

Congratulations to these young people .God bless them.

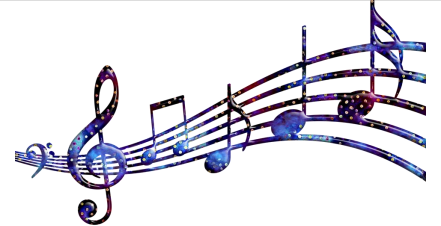
We have had some wonderful people that have shared their talents in our church and we will try to have some new ideas. My next report will give you some of the information after we meet.

Thank you to all that participated in all of the music. I thank our Marlene and Glen Sellevold for all they did during the 16 years of their dedication.

I also thank the special music , the pianists, the choir and all instrumental talent that were part of our services'

**GOD BLESS OUR CONGREGATION, OUR PASTOR AND OUR STAFF FOR THEIR CONSTANT DEDICATION AND WORK.**

Margaret Tretheway



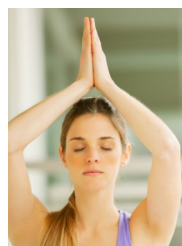
## SYNOD YOUTH GATHERING

Hello, Friends,



We are planning a **South Dakota Synod Youth Gathering Day on July 25th, 2022 at Augustana University in Sioux Falls.** I have gathered some of the best volunteers to help me plan this one-day event for our high schoolers, and details are still being hammered out. Keep your eyes peeled for registration to open soon! Subscribe to the Synod’s e-news and watch our social media platforms to be the first to know the specifics! Teens, mark your calendars and plan to attend. We will enjoy a fun day of service, food, worship, prayer, fellowship, speakers, and did I mention food? And parents and grandparents: nudge your teens to grab their friends and plan on attending!

Tammy Steffensen, SD Synod Gathering Coordinator

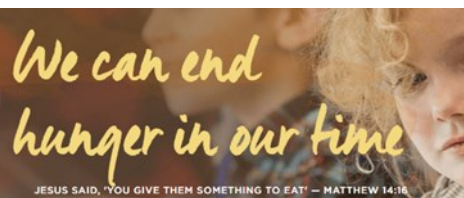


## YOGA CLASSES

Gentle yoga with Jackie will continue in May. We will meet in the Narthex at 11:30 AM on Monday and Thursday mornings.

Masks will be optional. A six foot distance between participants will be practiced. Everyone is welcomed to attend. Hope to see you there!

## BREAD FOR THE WORLD – OFFERING OF LETTERS



Our annual Offering of Letters is an opportunity for advocacy on behalf of God’s vision of a world where all are fed. Chronic hunger is not inevitable. In rich and poor countries alike, poverty is the #1 cause of hunger in the world. Like Jesus call to “Come and have breakfast,” our letters are a way to live out God’s call for all to come to God’s table of abundance.

CLF has participated in the Offering of Letters for a number of years, and with hunger becoming more widespread, we are offering this opportunity to encourage our representatives to support the Farm Bill, as well as asking to make the one-year Child Tax Credit permanent. On **Sunday, May 1<sup>st</sup>**, we will have all the materials needed to write a letter to your representative to support hunger relief. Join us as we work to end hunger. Thank you!

## HATTERVIG’S CELEBRATE 60 YEARS



Recently, Jim & Pat Hattervig celebrated their 60th Wedding Anniversary at Fellowship after Church. Those that attended were able to enjoy cake, coffee and etc.

We want to wish you many more years together, Jim & Pat!





## CHURCH E-MAIL ADDRESSES

If you would to e-mail someone in the church office, our e-mail addresses are:  
 Pastor Pam — pam\_clf@gwtc.net  
 Main address— clf@gwtc.net

## JUNE NEWSLETTER DEADLINE

Please have articles for the June Newsletter to the office **by May 18<sup>th</sup>**. Thank you!



## OFFICE HOURS

The church office is open Monday to Thursday from 8:30 AM—4:00 PM.

## PRAYER SHAWL MINISTRY



If you have someone in your life who needs some extra comfort and prayers, please pick up a prayer shawl from the office. Everyone is welcome to do so at any time—just let someone in the office know when you do, as we keep a journal of all activity.

## CLF WEBSITE OFFERS ONLINE GIVING OPTIONS

On Custer Lutheran Fellowship’s website, [www.custerlutheran.com](http://www.custerlutheran.com) you will find the option to support Custer Lutheran Fellowship’s mission and ministry through the “ONLINE GIVING” link. Whether you’d like to make a one-time donation or set-up regularly scheduled donations, you can do this easily through a secure server by following the instructions. At this time, CLF accepts bank account (ACH) transactions only. You can set up your own login/password and make changes with your giving at any time.



**ENJOY THE SPRING WEATHER AND PLEASE PRAY FOR RAIN!**

## MARCH BUDGET REPORT

|                                 | Non-Restricted |               |
|---------------------------------|----------------|---------------|
|                                 | <u>Actual</u>  | <u>Budget</u> |
| <b>Income</b>                   |                |               |
| Offering Contributions          | 72,701         | 74,375        |
| Non-restricted Special Donation | 962            | 867           |
| Interest                        | 4              | 75            |
| <b>Total Income</b>             | <u>73,666</u>  | <u>75,317</u> |
| <b>Expenses</b>                 |                |               |
| Pastoral Leadership             | 22,661         | 23,679        |
| Worship                         | 3,106          | 3,594         |
| Education                       | 0              | 4,275         |
| Mission Support                 | 9,765          | 9,890         |
| Support/Care                    | 32,639         | 40,171        |
| <b>Total Expenses</b>           | <u>68,170</u>  | <u>81,608</u> |
| <b>Net Ordinary Income</b>      | 5,496          | -6,291        |

## MISSING BIRTHDAYS AND ANNIVERSARIES

If you have noticed that your birthday or anniversary has been missing from our birthday and anniversary list, please do not be offended! We are not omitting you on purpose! It is because we do not have the information sheet we need that has birthdays, updated phone numbers, and email addresses. This is true even if you have filled out information for your children through the confirmation or SPARK Kids program. We may have children’s birthdays, but not the parents. Please stop by the office and fill out a form so we may update our lists to include your very important dates! You can also give us your birthday without providing the year! Thank you!





**LYNN'S RECEIPTS....**

We are still collecting receipts from Lynn's Dakotamart. We appreciate so much everyone who brings their receipts. We wanted everyone to be aware that we do not collect the gas discount receipts, though. We want you to keep those to get your gas discount! But continue to drop off your receipts in the office or in the can at the Welcome Center. Thank you!

**"CHRIST IN OUR HOME"  
DEVOTIONALS**

The "Christ in Our Home" daily devotional booklet is issued quarterly by Augsburg Fortress. The **April through June issue** is here. We give thanks to W/ELCA for providing this devotional for your personal use.

If you would like an issue, you can stop by the office to pick one up, or contact the church office to have a copy mailed to you.



The church office will be closed on Monday, **May 30<sup>th</sup>** for observance of **Memorial Day.**

**CONFIRMATION PARTY**



**PLEASE NOTIFY PASTOR PAM WHEN:**

- ✦ There is a hospitalization in your family
- ✦ There is a death in your family
- ✦ You would like a pastoral visit
- ✦ There is a birth or adoption
- ✦ Someone becomes homebound
- ✦ Someone becomes unemployed
- ✦ There is a cause for sorrow or a cause for joy

Hospitals don't notify the pastor that a member is in the hospital, even if they ask your church membership when you arrive. So please let the pastor know if you or a family member is in the hospital. Custer Lutheran Fellowship, the body of Christ, wants to bring you Christ's love in all the seasons of your life.

Pastor Pam Power  
701-955-5282 (cell)

pam\_clf@gwtc.net  
673-4691 (church)

## THE WAY BACK TO OUR CENTER

Presiding Bishop Elizabeth Eaton

587 B.C.E. was not a good year. The siege of Jerusalem ended with the destruction of the city, its walls and Solomon's temple. Many died of starvation during the siege. The Babylonians, at the direction of King Nebuchadnezzar II, brutally removed the population of Jerusalem to exile in Babylon.

For three generations Judah lived in exile. Babylon was powerful. Babylon was wealthy. And Babylon was cruel. We hear in Psalms 137:1-3: "By the rivers of Babylon—there we sat down and there we wept when we remembered Zion. On the willows there we hung up our harps. For there our captors asked us for songs, and our tormentors asked for mirth, saying, 'Sing us one of the songs of Zion!'"

With the temple and Jerusalem destroyed, the identity of the people of God was shaken. Who were they now? Where was the Lord now? This was more than a political, military or economic crisis. This was an existential crisis.

The prophets Isaiah, Jeremiah and Ezekiel took this head on. This exile wasn't about the faithlessness of the Lord. Quite the contrary, it was a demonstration of the Lord's unwavering faithfulness, compassion and fierce love. The people and leadership of Judah had trusted in their own agency quite apart from depending on the Lord, as humankind too often does to terrible consequences.

So there in Babylon, the people carved out a life for themselves while remaining faithful and resisting assimilation. The Torah, the living word of the Lord, held them together. The prophets, through chastisement and comfort, gave hope. And, I imagine, they often thought of home—the beauty of Jerusalem and the majesty of the temple.

My cousins and I spent a good part of our childhood with my maternal grandparents. They were both immigrants from Transylvania and, with much hard work, built a life, raised a family and founded our family's beer distributorship. Our grandparents' house seemed palatial. The living room ceiling was two stories high, and each year there was the most amazing Christmas tree. Often, I go over every corner of that house in my memory, and I long for it. It was a shock when I drove past that house a few years ago and saw how small it was.

Back to Babylon. A new power arose in the region. Cyrus, king of Persia, defeated Babylon and decreed that the people of Judah should return home and rebuild the walls of Jerusalem. Nehemiah gives the account. In 52 days, withstanding violent plots by enemies, the walls were rebuilt. And then the people gathered to hear the Torah.

I was surprised to hear that they wept. Why? Some say that when hearing the Torah they were grieved by their disobedience. I think it is much more than that. Not everyone came back to Jerusalem. The city of their memory was destroyed. It wasn't grand anymore. They were utterly spent from repairing the walls. There was exhaustion, relief, grief and hope. Their long years in exile imagining the return to Jerusalem were not met with reality.

We have been in this pandemic for two years. We have been longing for the "Before Times" that in our imagination seem as magical as my grandparents' house. The return to a post-pandemic world, like the return of circulation, is initially painful. We will need to rebuild those structures necessary for a healthy society—compassion, respect, sacrifice for the greater good, the celebration of diversity, justice.

And we will need the word of the Lord—the Word that calls us back to our center, which is the steadfast love of God, law and gospel, judgment and promise.

We will weep with exhaustion, relief, grief and hope. And there, drawn by God who is our center, we will find each other again.





# GOOD FRIDAY CROSSWALK

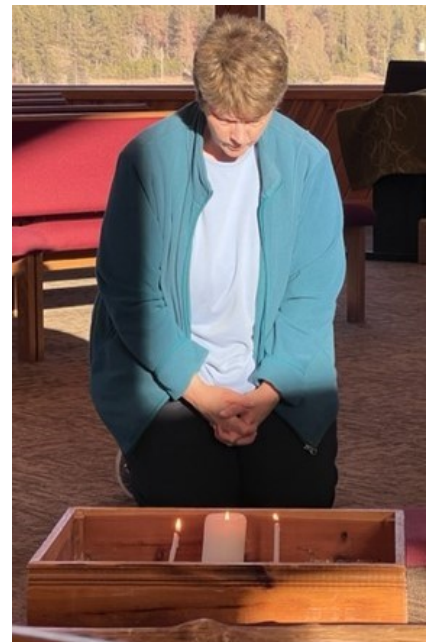
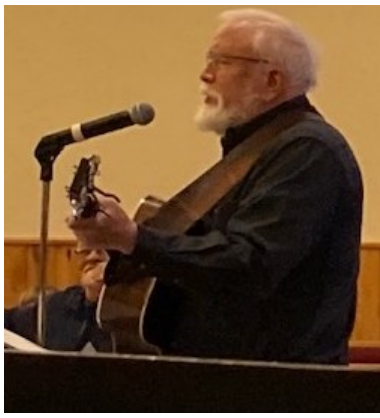


---

# MAUNDY THURSDAY AND GOOD FRIDAY







### THANK YOU PINE RIDGE RECONCILIATION CENTER

On April 3<sup>rd</sup>, Pastor Dan Johnson, came from Pine Ridge, to share a message with us at CLF about what they do at the Reconciliation Center along with our Lenten Offering with the Pine Ridge Diaper Drive. He also presented CLF, with a star quilt that was made by some of the Pine Ridge People at the Reconciliation Center. We are so 'Thankful for our mission with the Pine Ridge Reconciliation Center'.



**PLAN YOUR LEGACY LIKE YOU PLAN YOUR VACATION**

Summer is just around the corner — vacation time has finally arrived! After two years of planning and postponements and cancellations, we’re ready to hit the road, take to the skies, pull up the anchor and get away.

Updating wills is often a part of vacation plans (because everyone knows that most deaths occur during a fight to Hawaii or on a cruise ship, right?!) But don’t wait to take a vacation to be certain that your estate plan is current and will accomplish everything you intend for those you love and the ministries you care about and want to support.

Your estate plan, just like your vacation, might be simple and uncomplicated -- a quick drive to the cities for the weekend, or more elaborate and lengthy - - and African safari or a visit to the Holy Land. Either way, Lutheran Planned Generosity can help you create the road map and details to customize your plans and reach your destination that benefits you, your family and your faith. Call 605.274.5030 or email: [kmchenry@sdsynod.org](mailto:kmchenry@sdsynod.org) to start your legacy adventure.



Kathy McHenry, Executive Director, LPGSD





## SD SYNOD NEWS

Dear SD Synod,

Grace and peace to you in the name of the Father, and of the Son, and of the Holy Spirit!

Driving across the State I can see that we are pretty dry. I pray for rain and moisture to water our parched lands. I also lift up prayers for our ranchers and farmers. It's not only the land that is parched, but spirits can run dry too. You may remember that in the very first months of my term you were invited to a farm summit in Mitchell, SD. We shared in the joys and challenges of farming and ranching, learned about resources, and were assured that God's always close at hand. At the same time of the farm summit, I also collaborated with Lutheran Social Services of SD. We partnered to offer Mental Health First Aid training to our leaders so that they can learn about the first signs of distress. But we also developed a web-based tool called Psychological First Aid. It was designed with your neighbor in mind. You can take this web-based training at your pace and at your time. It strives to equip you with what you need to read early warning signs of mental health issues, and gives you tools to be a good neighbor to your neighbor. Please watch for the link to come your way soon via our synod's e-news, please sign up at [www.sdsynod.org](http://www.sdsynod.org).

Last but not least, many ask about how to best support the Ukrainian refugees. At this time your monetary gifts to Lutheran Disaster Response (LDR) or Lutheran World Relief (LWR) are the best help you can provide as they aid relief efforts on the ground. Our ministry partner LSS is in close communication with the federal government to see how to best assist refugees that will find their way to the United States. Watch your e-news for regular updates.

Journeying with you,  
Bishop Constanze Hagmaier

---

### Do not fear...

Rev. Renee Splichal Larson

When we are anxious about the future, we place our trust in God. There is hardly a more anxious time for a congregation than when it is without a pastor. Yet, times of transition are part of the cycle of life in a congregation. It is a wilderness time when we fully lean on God and the Spirit's guidance. We do the same as Synod staff, as your Partner in ministry. We look at the "accepting names" section on our call process page on our website, it could be easy to be overwhelmed and discouraged. Where will the pastors and deacons come from, Lord? How will you sustain ministry in your Church?

But then I am reminded of the words of God in the book of Isaiah, chapter 41, verse 10:

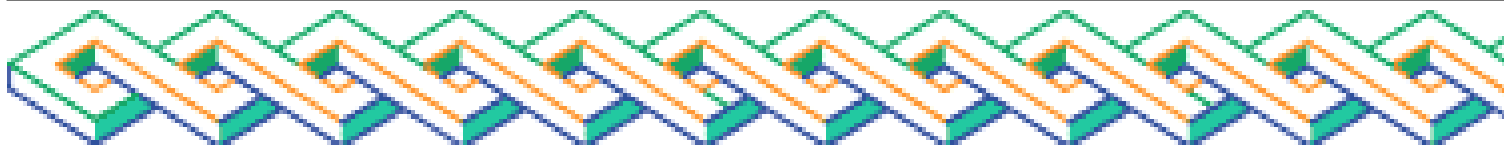
"Do not fear, for I am with you, do not be afraid, for I am your God; I will strengthen you, I will help you, I will uphold you with my victorious right hand."

These words of promise are meant to assure us of God's presence and help. We need not fear the future for God is with us. Even in times of transition, ministry happens and the Gospel is proclaimed! People step up and realize they may have gifts they have never discovered, and we get creative about ways we do ministry, especially in our more remote congregations. Pr. Alan Blakenfeld's call is one way we are doing this.

As I look back at 20021, I see that we had 38 Ministry Site Studies, and in turn issues 38 letters of call as a synod. That doesn't mean that every open call was filled, and some congregations certainly wait longer than others, but it does mean that God is faithful and calls are happening.

If and when you or your congregation is anxious, turn again to these words and promise from God:

"Do not fear, for I am with you, do not be afraid, for I am your God; I will strengthen you, I will help you, I will uphold you with my victorious right hand."



### W/ELCA HAPPENINGS

Next meeting: **Monday, May 16<sup>th</sup>**, at 11:30 AM in the Fireside Room. We will have a potluck. Please bring a dish to pass. Lynn's chicken will be provided. Our speaker will be Mark Thompson. Mark will tell us about the history and the making of Outlaw Ranch. The meeting will be open to women and men who would like to learn more about this very interesting topic. Outlaw Ranch is an important part of our community and its history.



Our speaker for our April meeting was Rex Jorgenson. Rex gave us a very uplifting update about what is happening at the YMCA. There are changes being made every year at the Y. All of them have to do with growth and helping young people and adults in our community. Rex's optimism and obvious love for the Y and all that it stands for is greatly appreciated.

We have decided to have a Silent Auction of Talents on **June 26<sup>th</sup>**. Folks are invited to donate talents of goods as well as services. Craft items, the promise of food items and services such as baby sitting, fire wood delivery and making a meal are just examples of what might be donated. We will set up the auction items for all of the Sundays in June. Folks will have the opportunity to bid on items anytime during the month. We will finalize bidding after the service on **Sunday, June 26<sup>th</sup>**. Forms will be available at the Welcome Center to be filled out by folks who will be contributing items. Items to be auctioned can be left in the sewing room any time after May 15<sup>th</sup>. Please label your item for the auction.

The mission that we would like to support during the month of May is the Reconciliation Center at Pine Ridge. Meals are being served from there each day and they are in need of food. We will be collecting canned food items and dry goods for this cause in May. Items can be put on the cart in the Narthex. Ideas for what we would like to collect are as follows:

- Canned food—meats, vegetables, fruits and soups
- Spaghetti, pasta and sauce
- Cereals
- Instant potatoes
- Stuffing mix
- Cake mixes
- Sugar, flour
- Peanut butter
- Macaroni & cheese

Pastor Dan said that diapers can always be used and are greatly appreciated at any time. Thank you in advance for any help that you can give in supporting this W/ELCA mission for the month of May.

### QUILTING....

The quilters have been very busy. Twenty-six quilts were just sent off to Lutheran World Relief and nine to SD Children's Home Society in Rockerville.

Thanks for all the supplies you give us. We do need an iron . . .  
Come join us Tuesday mornings. We have fun and enjoy the Fellowship.  
The "Happy" Quilters

### Thank You

I would like to take this time to say a heartfelt 'Thank You' to those who brought food, cards, and calls. Also, like to say a "Special Thank You" to those who did the special errands for me while I have been recuperating.

I am getting better, but will be a little bit of time yet before I can get back to my full activities.

Know that you are in my thoughts and prayers.

Thank You!  
Barb Severin

### W/ELCA SERVES MEET & EAT

W/ELCA served the Meet & Eat Group in April. They served a delicious meal of BBQ's chips, pickles, salad, veggies with dip and bars. Great Job Ladies!



**COUNCIL — APRIL 26TH, 2022**

Due to the CLF Council Meeting held on April 26th, the Council Minutes for the May Crossroads Newsletter were unable to be printed in this issue. Watch for the April Minutes in the June Newsletter!

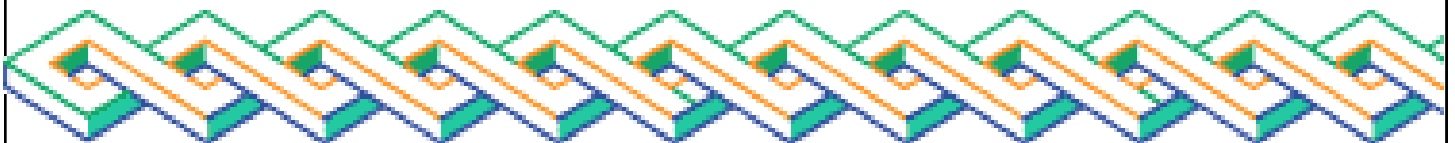


Join LSS & your South Dakota neighbors  
for the first ever LSS Day of Giving!

Donate now through May 12 at  
[SouthDakotaCARES.org](https://SouthDakotaCARES.org)

Or scan the QR code below with your phone

Support the LSS services closest to your heart. Every  
dollar donated will be matched & invested in the  
future of LSS services!





## ELW DEVOTIONS FROM THE DAILY LECTIONARY

### Easter 3

*Sunday, May 1:* Acts 9:1-20; Psalm 30; Isaiah 6:1-4; Revelation 4:1-11

*Monday, May 2:* Psalm 121; Ezekiel 1:1-25; Acts 9:19b-31

*Tuesday, May 3:* Psalm 121; Ezekiel 1:26—2:1; Acts 26:1-18

*Wednesday, May 4:* Psalm 121; Isaiah 6:1-8; Luke 5:1-11



### Easter 4

*Thursday May 5:* Psalm 23; Ezekiel 11:1-25; Revelation 5:1-10

*Friday, May 6:* Psalm 23; Ezekiel 20:39-44; Revelation 6:1—7:4

*Saturday, May 7:* Psalm 23; Ezekiel 28:25-26; Luke 12:29-32

*Sunday, May 8:* Acts 9:36-43; Psalm 23; Revelation 7:9-17; John 10:22-30

*Monday, May 9:* Psalm 100; Ezekiel 37:15-28; Revelation 15:1-4

*Tuesday, May 10:* Psalm 100; Ezekiel 45:1-9; Acts 9:32-35

*Wednesday, May 11:* Psalm 100; Jeremiah 50:17-20; John 10:31-42

### Easter 5

*Thursday, May 12:* Psalm 148; Ezekiel 2:8—3:11; Revelation 10:1-11

*Friday, May 13:* Psalm 148; Daniel 7:13-14; Revelation 11:15

*Saturday, May 14:* Psalm 148; Daniel 7:27; Revelation 11:16-19

*Sunday, May 15:* Acts 11:1-18; Psalm 148; Revelation 21:1-6; John 13:31-35

*Monday, May 16:* Psalm 133; 1 Samuel 20:1-23, 35-42; Acts 11:19-26

*Tuesday, May 17:* Psalm 133; 2 Samuel 1:4-27; Acts 11:27-30

*Wednesday, May 18:* Psalm 133; Leviticus 19:9-18; Luke 10:25-28

### Easter 6

*Thursday, May 19:* Psalm 67; Proverbs 2:1-5; Acts 15:36-41

*Friday, May 20:* Psalm 67; Proverbs 2:6-8; Acts 16:1-8

*Saturday, May 21:* Psalm 67; Proverbs 2:9-15; Luke 19:1-10

*Sunday, May 22:* Acts 16:9-15; Psalm 67; Revelation 21:10, 22—22:5  
John 14:23-29; John 5:1-9

*Monday, May 23:* Psalm 93; 1 Chronicles 12:16-22; Revelation 21:5-14

*Tuesday, May 24:* Psalm 93; 2 Chronicles 15:1-15; Revelation 21:15-22

*Wednesday, May 25:* Psalm 93; 2 Chronicles 34:20-33; Luke 2:25-38

### Easter 7

*Thursday, May 26:* Ascension of Our Lord; Acts 1:1-11; Psalm 47; Psalm 93;  
Ephesians 1:15-23; Luke 24:44-53

*Friday, May 27:* Psalm 97; Exodus 33:12-17; Revelation 22:6-9

*Saturday, May 28:* Psalm 97; Exodus 33:18-23; John 1:14-18

*Sunday, May 29:* Acts 16:16-34; Psalm 97; Revelation 22:12-14, 16-17, 20-21  
John 17:20-26

*Monday, May 30:* Psalm 29; Exodus 40:16-38; Acts 16:35-40

*Tuesday, May 31:* Psalm 29; 2 Chronicles 5:2-14; Acts 26:19-29

*Wednesday, June 1:* Psalm 29; Ezekiel 3:12-21; Luke 9:18-27



## MEALS ON WHEELS

For years, CLF has taken the responsibility for delivering Meals on Wheels on Fridays. We are now down to four volunteers and can really use some more! We will be happy to train you and show you the ropes if you can commit to one weekend a month! The recipients are always so appreciative, but more than that we are doing our Father's work and are always so very blessed for doing so! Please contact Mark Hogg or the church office if you know of anyone who can help. Thank you!!





**Custer Lutheran Fellowship, ELCA**  
**12622 US Hwy 16A**  
**Custer. SD 57730**

**Return Service Requested**

U.S. Postage Paid  
 Non Profit Organization  
 Permit #5  
 Custer, SD 57730

Place label here.

## **Custer Lutheran Fellowship**

**Our Mission ...** is to plant the word of God, nurture growth in children and adults, and scatter the seeds of joy and faith in a diverse community.

**We envision Custer Lutheran Fellowship** to be like the Black Hills themselves, an inviting community in which God's Spirit blows through people – like wind through the pine – life that is forever new! God's spirit inspires us to be:

A **worshipping** community, hearing the life-giving Word of God receiving Christ's very presence in the Sacraments, and raising our voices in joyful songs of praise and prayer;

A **growing** community, with building and grounds spacious enough for all;

An **intergenerational** community, nurturing children and youth, young adults, people in mid-life, and older people as one family of God;

A **learning** community, in which people of all ages take advantage of multiple opportunities to deepen their understanding of the grace and justice of God;

A **giving** community, generously offering our time, talent and treasure to support each other and share in Christ's ministry;

A **servicing** community, reaching beyond ourselves to stand with the poor, the sick, the hungry and the oppressed;

A **witnessing** community, eager to share with everyone the joy we have received from Christ.

***We believe in the Cross and our risen Lord and that through Christ we have eternal life***

### **Our Bedrock Beliefs are...**

We grow in faith through worship and sacraments

The Word of God is our hope, Support comes from within our family of believers who see and serve Jesus in others

Through prayer we evoke God's love and power as the Spirit intercedes for us "with sighs too deep for words to express"

In crisis God is our strength. He is all loving and accepting and He helps us through these times.

We have faith only through God's grace.

### **Our Core Values are:**

*Faith, Family, Mission,  
 Service, Worship*



### **Ministering at Custer Lutheran Fellowship**

Pastor: Pamela Power  
 Office Manager: Mary Moe  
 Parish Nurse: Mary Klein  
 Custodian: Augie Heyne  
 Music: Margaret Tretheway  
 Choir Director:  
 Financial Secretary: Ann Snow  
 Treasurer: Joy Smolnisky  
 SPARK Kids: Sara Mooney  
 Emily Hiatt

**Ministers: All Members of CLF!**